



CALEB'S REAPER TOOLBOX MANUAL

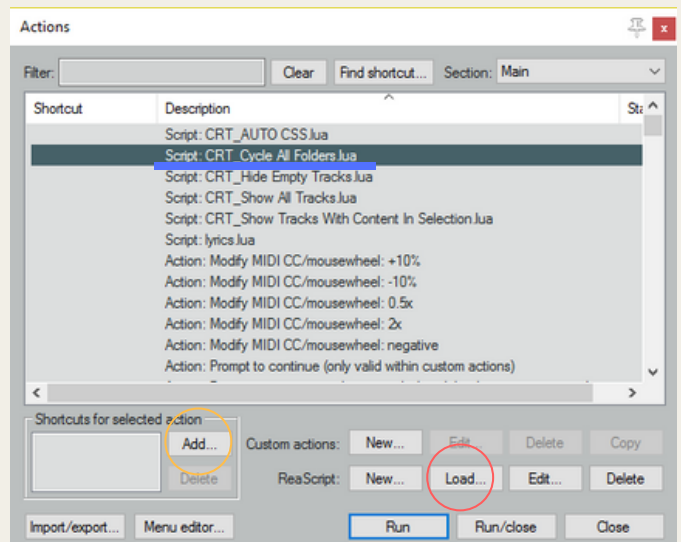
INSTALLATION

After either running the installer or extracting the .zip to '%APPDATA%\Reaper\Scripts' in Reaper head into the actions menu ('?' keyboard shortcut).

Click on the 'Load...' (RED CIRCLE) button next to 'ReaScript' and select all of the scripts you want to use. Each script represents a different action and is described by the file name.

Following this you can assign keyboard shortcuts for any script by clicking 'Add...' (ORANGE CIRCLE) when the script is selected in the list above (e.g. BLUE LINE).

You can also create customized toolbars through the Options/Customize Menu/Toolbars... option within the top menu of Reaper



INDIVIDUAL SCRIPT INFO

MIDI

CRT_MIDI_CSS AUTO PLAYBACK

CSS specific. This script needs to be run at the start of each session/project. Once run it will automatically shift any MIDI notes by the appropriate amount on playback to compensate for any delay on tracks specially marked. **This will allow you to write legato lines just like the old style!**

Add the following text to a track to mark it:

- "[CSS AL]" for advanced legato
- "[CSS SL]" for standard legato
- "[CSS S]" for shorts/marcato

Note: you have to have ends overlapping to trigger the legato movement.

Example usage below:



CRT_MIDI_CSS Nudge - Auto Velocity Advanced

CSS Specific. Nudges all **selected** items within the MIDI editor to compensate for the advanced legato delay. You need to add the keyboard shortcut in the actions menu with the section set to 'MIDI Editor' (top right).

CRT_MIDI_CSS Nudge - Shorts

CSS Specific. Nudges all **selected** items within the MIDI editor to compensate for the shorts delay (50 ms). You also need to add the keyboard shortcut in the actions menu with the section set to 'MIDI Editor' (top right).

CRT_MIDI_Nudge ms

Nudges all **selected** items within the MIDI editor with the value provided by the user (in milliseconds). You also need to add the keyboard shortcut in the actions menu with the section set to 'MIDI Editor' (top right).

TRACKS

CRT_TRACKS_Cycle All Folders

Cycles the compact level of all folders in the TCP. If a folder is selected it will reference it's compact level and set the folders to the next level.

CRT_TRACKS_Hide Empty Tracks

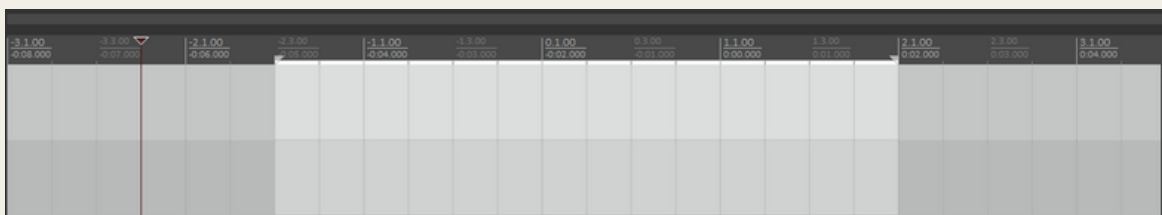
Hides all tracks in the TCP with no media items.

CRT_TRACKS_Show All Tracks

Shows all tracks in the TCP.

CRT_TRACKS_Show Tracks With Content In Selection

Shows all tracks in the TCP with content in the selected range (also called loop point). Hides tracks without content in the selected range. Example selection below:



BUG REPORTS + FEATURE REQUESTS

Please send any bug reports to caleb@calebfaith.com.

Feature requests are very welcome feel free to send them to the above address!